

cromada
works

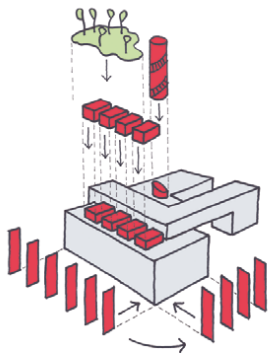
CROMAA STUDIO was born in 2011 based on Roberto Mattioli's idea. It was created with the main aim of developing innovative architectural solutions, which means giving to his own works particular nuances reflecting both the project objective and the author creativity. The result is an integrated vision of art and professionalism at the same time.

CROMAA bets on a spectacular simplicity. Every project has its own history and is not shaped on predetermined models. The studio develops a project from the beginning stage to the final delivery, integrating architecture with different forms of art, as everything is a source of inspiration.

CROMAA puts in practice the main principles of architecture and design, realizing innovative ideas where the project reflects itself through a satisfaction of the environment needs it is inserted in. In the analysis of a project, the effects of measure and balance are put in contrast as the result of an architecture created both in a social and economic field by missing traditional elements like work, spare time, life itself. Real and intangible parameters are used during the working process: material, light, structure, budget, models, atmosphere, weather, warmth, comfort, ease. All these subjects are treated with the same determination and force without losing sight of intercultural exchange, global streams and communication technologies which on the whole need new forms of architectural and urban organisation.

Architecture

Project: Industrial Building Renovation
 Type: International Competition
 Year: 2014
 Status: Honorable Mention
 Team: Roberto Mattioli,
 Sara Averardi,
 Igor Stipac



Sketch

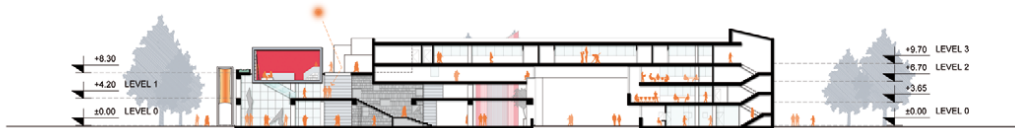
Concept of spatial and functional "Custom Tailoring" is foreseen as a tool for creation of "Dynamic Environment" able to accommodate wide range of challenges and possibilities

More specifically, New Cultural Center is conceived as a living organism which constantly change its modes of functioning according to specific needs and real-time situations.

System of multiple entrances and general layout allows for self-functioning units to be both isolated and/or to be constitutive part of a whole system.

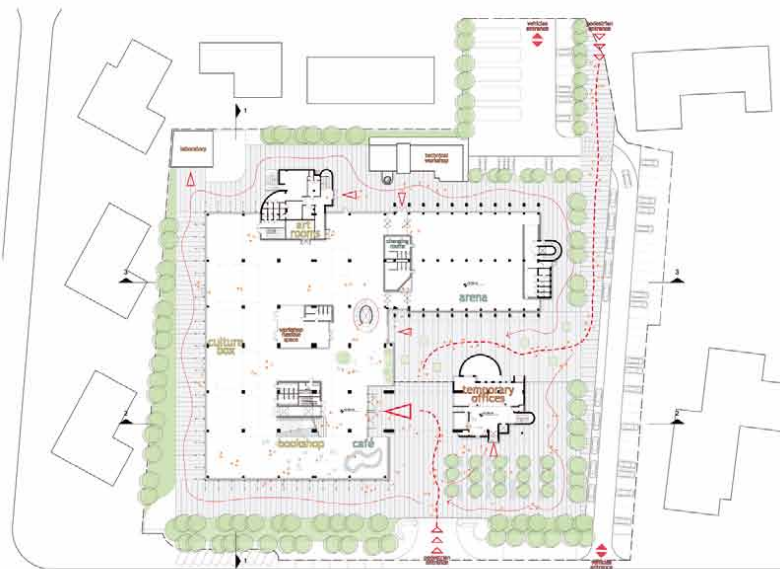
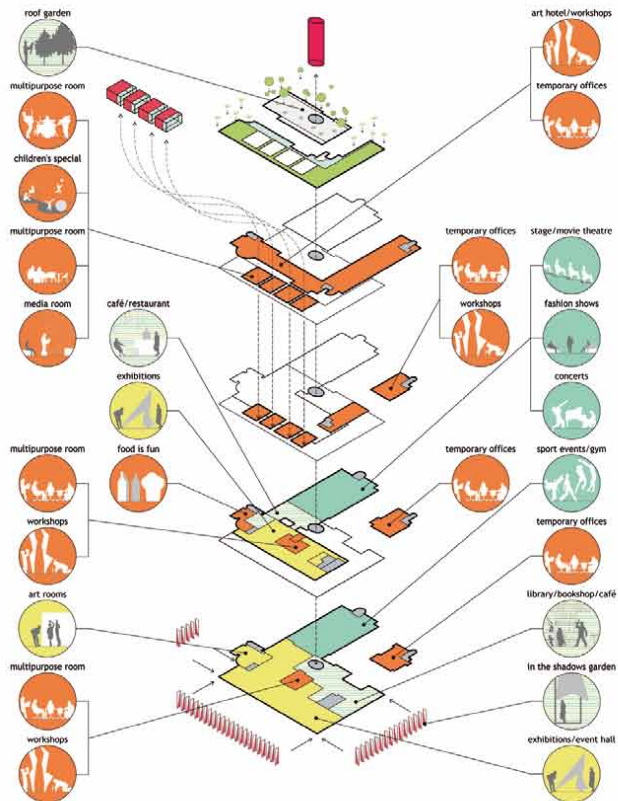


Site Plan



Sections

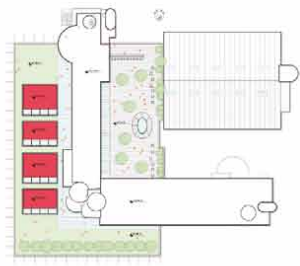




Ground Floor Plan



Diagrams



Plans

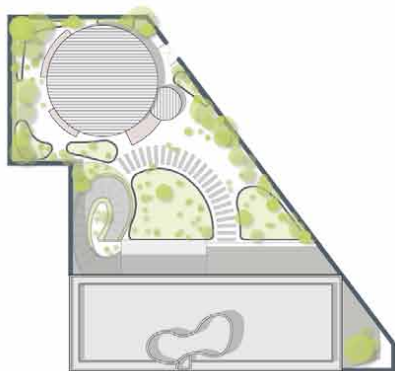


Project: Exhibition Pavilion
Type: International Competition
Year: 2012
Team: Roberto Mattioli,
Sara Averardi,
Simone Brigolin,
Davide Tinto

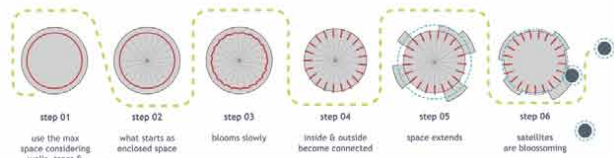
a dandelion-concept space:
as many possibilities as you can blow

blComArt

Logo



Site Plan



Concept



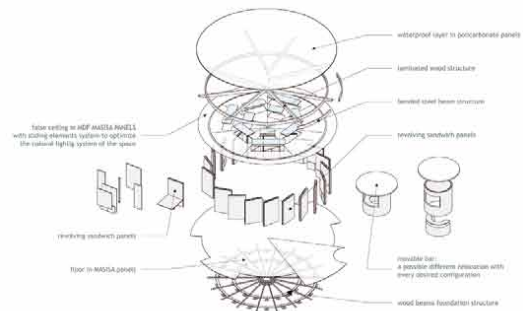
Site Elevation

The shape was a direct consequence of the need to use the given area as much as possible, while avoiding disrupting the already established "microsystem" of the courtyard. The circle permits free expansion in all directions where the garden allows it.

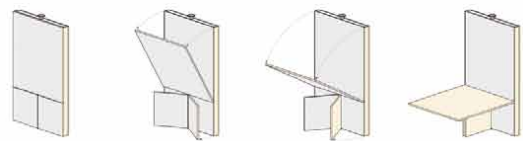
The result is an extension of the existing Archivo Diseño y Arquitectura fully integrated in the green environment: the users can find a strong relationship between interior and exterior; the garden is part of the space perception as much as the pavilion itself. The space can be at the same time completely void of walls or fully enclosed and separated from the exterior.

The bar is an independent satellite for both the pavilion and the archive gallery. It can be positioned where required, either in direct connection with the pavilion or anywhere in the garden. When linked to the pavilion pavement, the bar roof fits under the main roof providing a continuous covered space for the users.





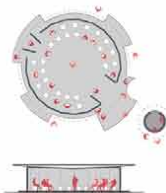
Exploded View Drawing



Revolving Panels



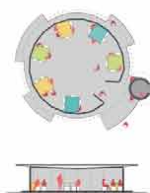
01
exhibition



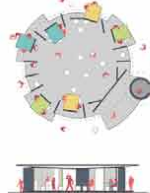
02
presentation



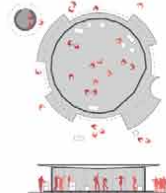
03
concert



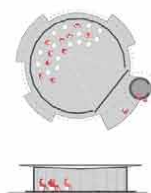
04
workshop



05
cafeteria



06
vernissage - disco party



07
cinema - projector

ALTERNATIVE CAR PARK TOWER

Hong Kong (China)

Project: Parking Tower
 Type: International Competition
 Year: 2011
 Team: Roberto Mattioli,
 Stefano Arrighi,
 Pietro Bodria

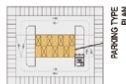
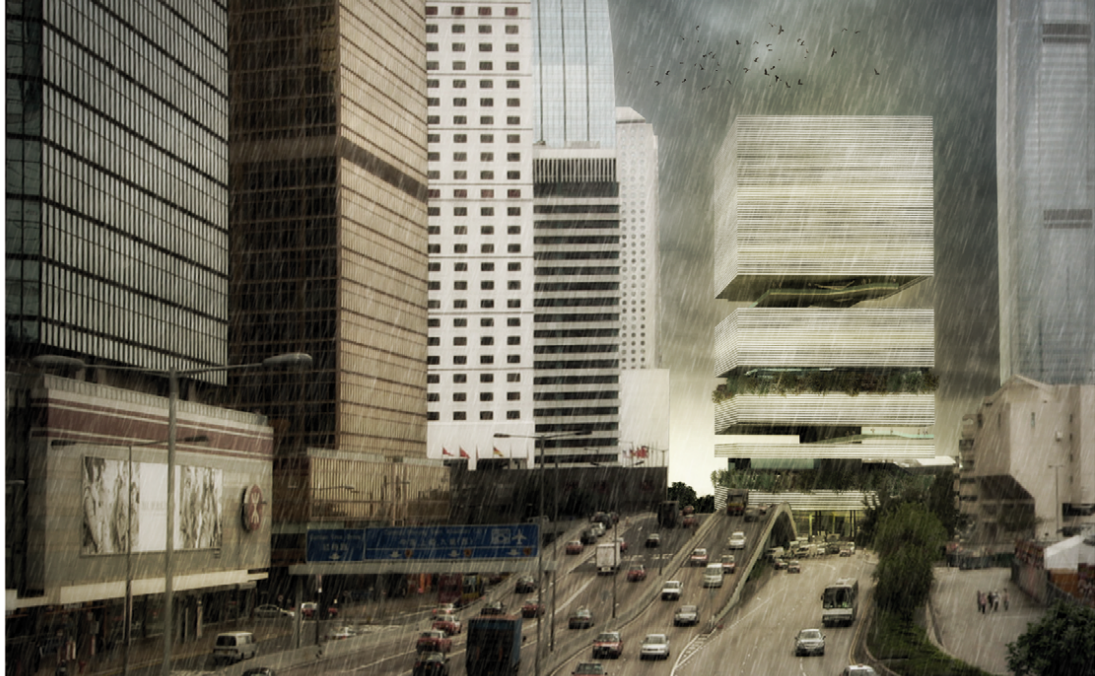


According to current projections, the Hong Kong population will reach approximately 9.0 million around 2025 and due to this reason, the complexity of the urban factory is destined to increase. In order to avoid past mistakes, it is necessary to adopt new guidelines.

Connection, accessibility and sustainability are the true needs of the future cities. The citizens will have a new connection with the city due to different visions and opportunities.

The parking lot will be considered as a new structure devoted to mobility as well as being compared to urban values, characterized by new images and exchanges.

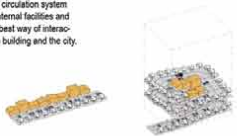
In this light, the parking lot becomes both connection node and meeting place.



Schematic Plans and Sections

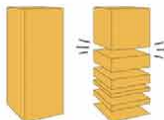
CONTINUITY

The external circulation system can merge internal facilities and become the best way of interaction between building and the city.



URBAN VOIDS

The vertical development often does not provide the urban void. The new car park relates to the city with several layers, offering different views and points of contact.



CIRCULATION

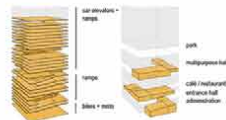
The internal void characterize the vertical circulation using a car elevators mechanism that allows quick access to upper floors of the lower; moreover this vertical chimney works with the green filters in a stack ventilation system reducing the air pollution.



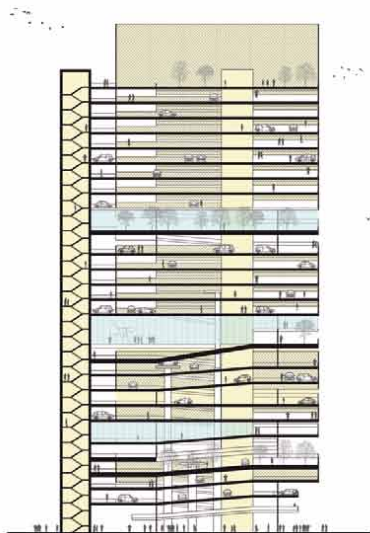
PROGRAMS

The distribution is thought to split the flows in order to decrease the traffic.

The different programs are integrated in the whole parking while not interfere with the safety and the flows of the car parking.



Diagrams



Section



HOTEL CENTRO 2010

Guadalajara (Mexico)

Project: Hotel
Type: International Competition
Year: 2011
Team: Roberto Mattioli,
Carmine Baldi,
Leonardo Parisi

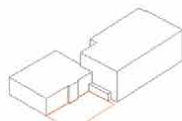


Site Plan

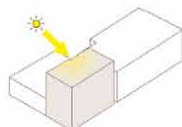
This hotel creative solution springs out of an architecture which is not only based on an aesthetic judgement but also on an innovative trick. In fact the style of the façade is defined through a particularly repeated visual recognition. In the project approach a total amount of 52 rooms can be distinguished: 24 double rooms, 20 single rooms and 8 suites.

On the southside a patio has been placed which all the internal spaces of the hotel depend on.

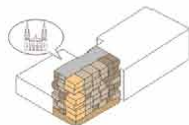
The games given by every room window which faces the Cathedral "Basílica de la Asunción de María Santísima" stress a unique fun proposal for all the hotel guests.



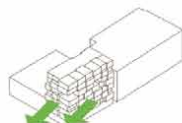
Site Outline



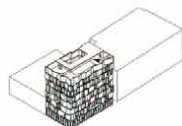
Sun Exposure



Programs

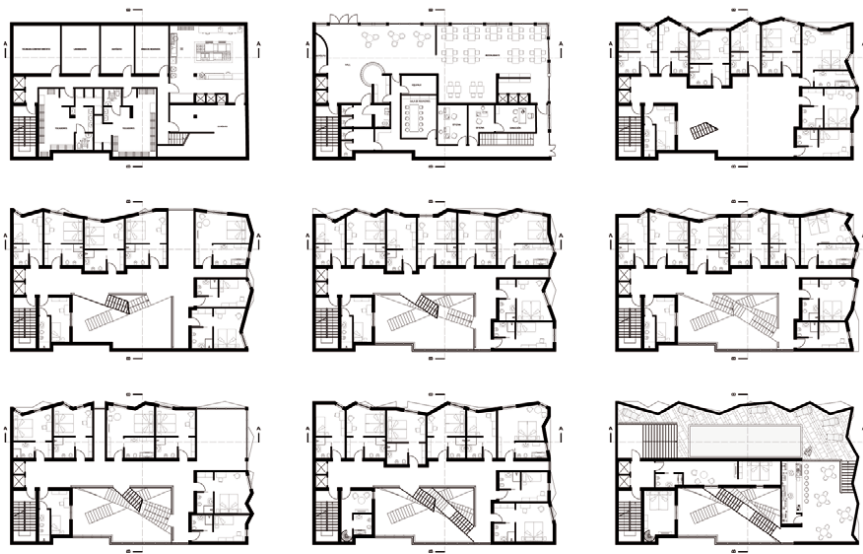


Cathedral Views

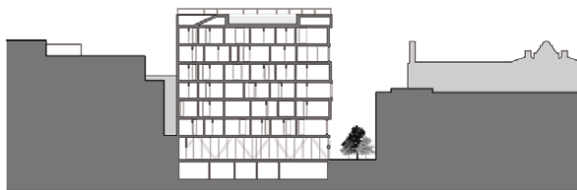


Hotel Centro





Floor Plans



Sections



Project: Urban Masterplan Renovation,
Sport and Congress Hotel
Type: International Competition and
Master's Degree Thesis with
M. Marchesini (MDU Architetfii),
Faculty of Architecture,
University of Parma
Year: 2009/2010
Team: Roberto Mattioli,
Emma Sánchez Ruiz,
Federico Frugoni



Context Plan

The guidelines accompanying this project and orienting the settlement strategies of the whole work have been forgetting the obstacles.

The intervention zone is the western part of Berlin, in the Pichelsberg area, a part of the German capital particularly spoilt which had an important place in the city history. Pichelsberg the Olympic games took place in 1936.

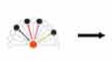
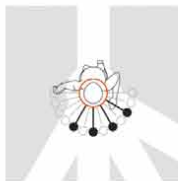
The hotel is placed in the central part of the masterplan. The structure has three main objectives: giving a visual relationship among the existing buildings, caring about the sun exposure and getting a figurative function in relationship with Pichelsberg Tip.

The structure of the hotel is composed by two elements: a lower platform balancing the height difference with soil and containing all the common areas and a tower with all the guest rooms.





Braille Based Self Position Method



Path 1
Park Entrance Area or Meeting Point



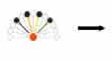
Path 2
Park Entrance Area or Access to Walkway



Path 3
Park Entrance Area or Main Street Walkway



Path 4
Park Entrance Area or Main Street Walkway



Path 5
Park Entrance Area or Main Street



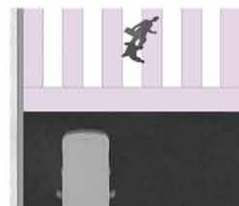
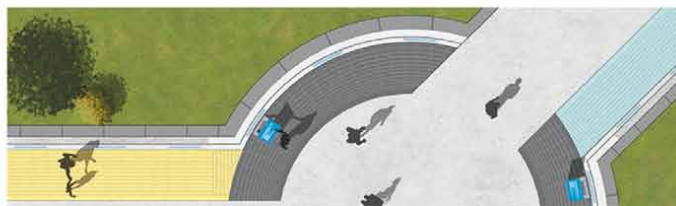
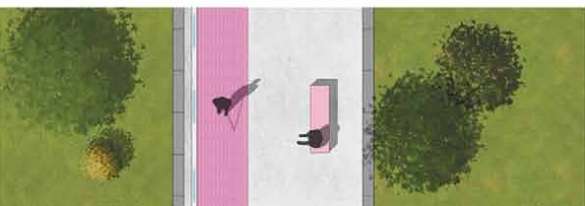
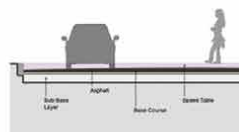
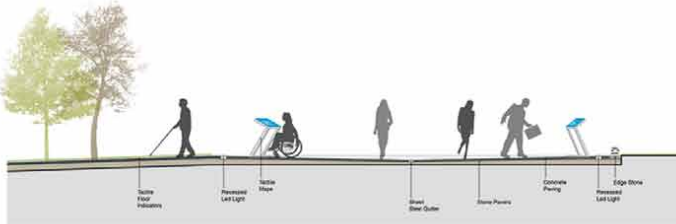
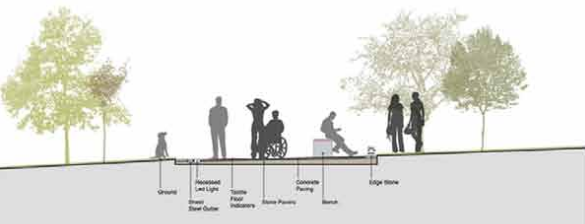
Path 6
Park Entrance Area or Main Street



Path 7
Park Entrance Area or Main Street



Path 8
Park Entrance Area or Main Street

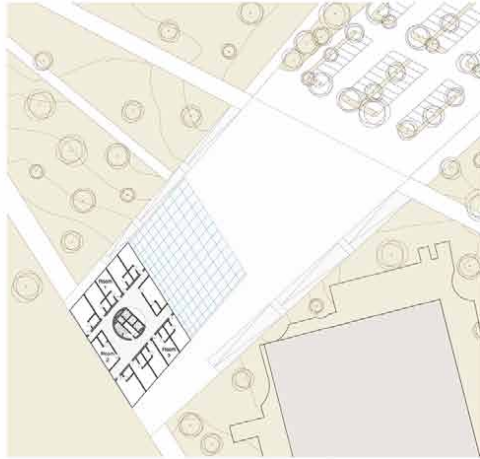




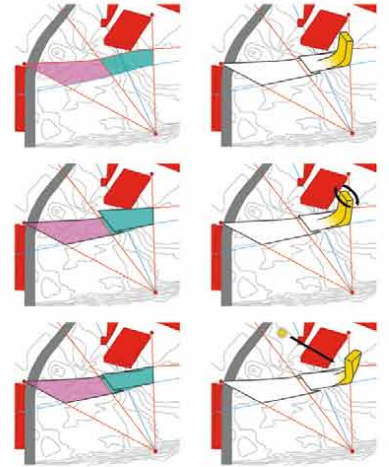
Zoning Diagrams



Accessibility Plan

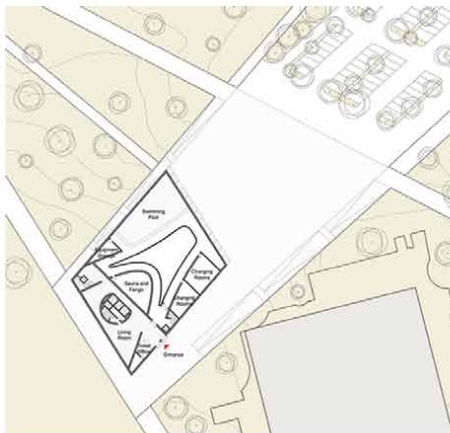
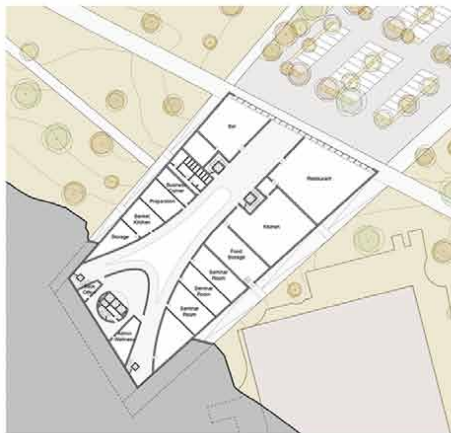


Hotel Floor Plans

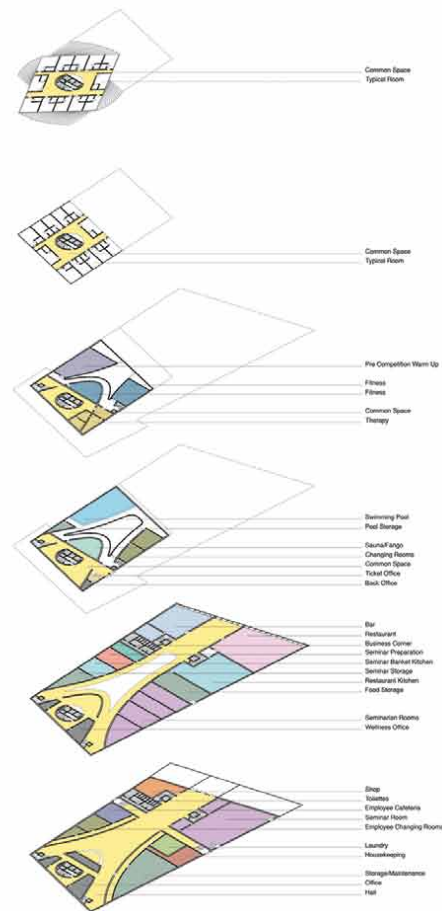


Concept

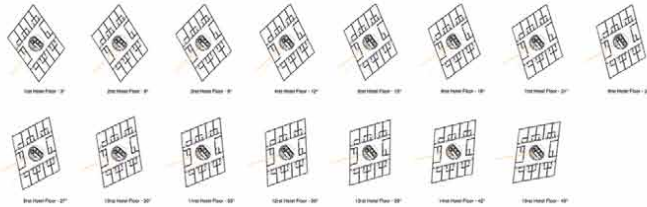
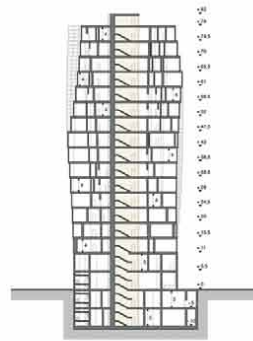
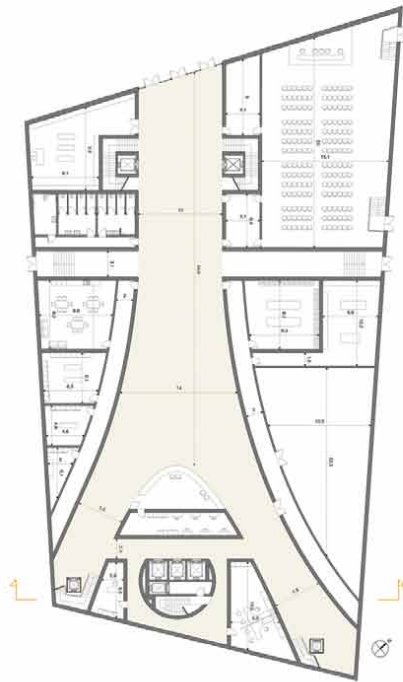




Hotel Floor Plans



Programs

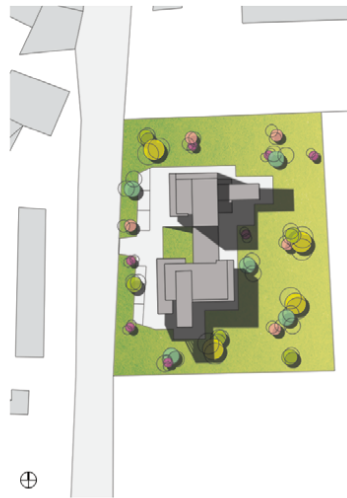


Floor Plans, Sections and Rotation Diagrams



PRIVATE HOUSES IN MARIANO Parma (Italy)

Project: Private Houses
Type: Architectural Design II,
Faculty of Architecture,
University of Parma
Year: 2008/2009
Team: Roberto Mattioli,
Marco Belli



Site Plan

This project tries to experiment a new model of tridimensional space starting from basic primary forms. This means that the external shape is given by big modules entering inside of the building where the living levels create a unique space.

The façades are realised in reinforced concrete which reflects the general strategy: a unique volume crossed by several boxes.

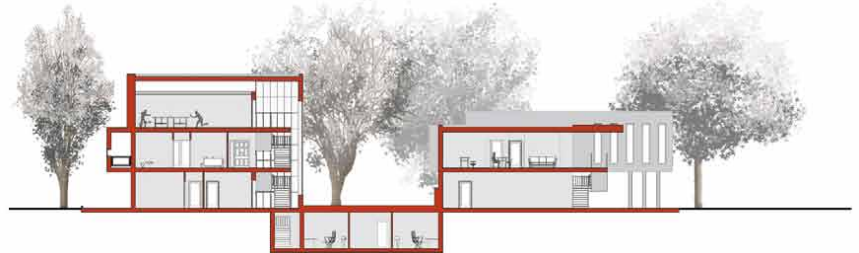


Elevations



Floor Plans





Sections



LA PUNTILLA WATERFRONT DEVELOPMENT

Las Palmas de Gran Canaria (Spain)

Project: Urban Waterfront Development and Housing

Type: Architectonic Projects IV with M. González (nRed Arquitectos), Superior Technical School of Architecture of Las Palmas de Gran Canaria

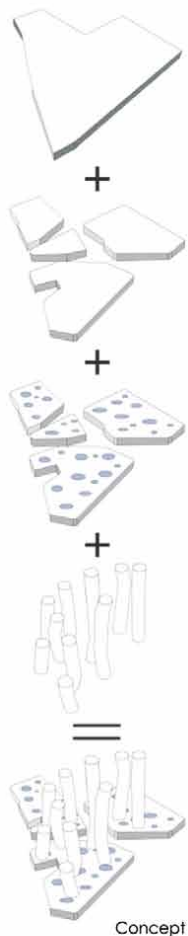
Year: 2007/2008

Team: Roberto Mattioli, Aday Alemán Godoy, Diego Cayuelas García, Elisa García Nieto, Daniel Ruiz Rivas

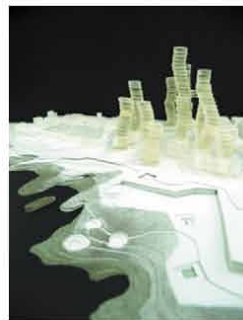


Physical Model

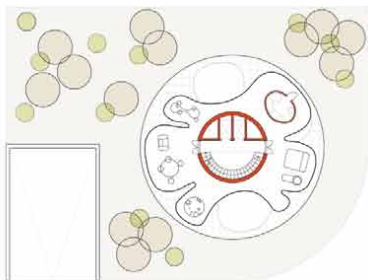
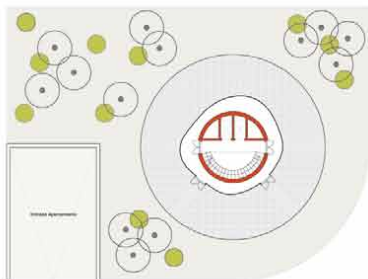
In this project I propose the renovation of the Urban Waterfront. It is concentrated on ten towers with different heights (from 10 to 35 floors) whose volume is connected with the vertical lines of the city. The towers develop from a series of module which mix up houses and services keeping the existing structures of the city unchanged.



Concept



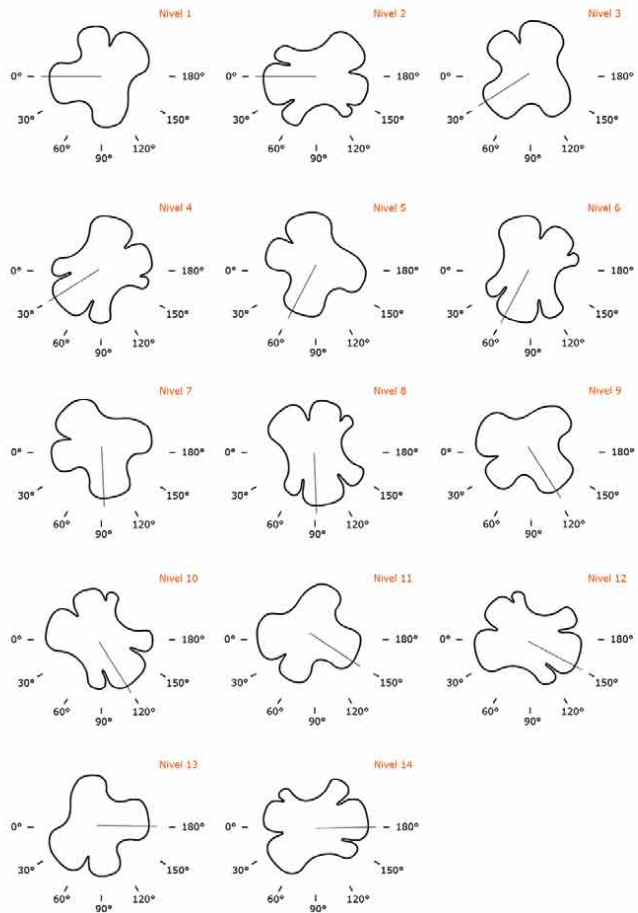




Floor Plans



Cross Section

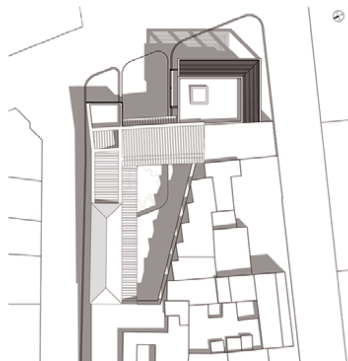


Rotation Diagram



CASA DEL CAPITÁN QUESADA RESTORATION Gáldar (Spain)

Project: Building Restoration
Type: Intervention in the Architectonic
Patrimony,
Superior Technical School of
Architecture of Las Palmas de
Gran Canaria
Year: 2007/2008
Team: Roberto Mattioli



Site Plan

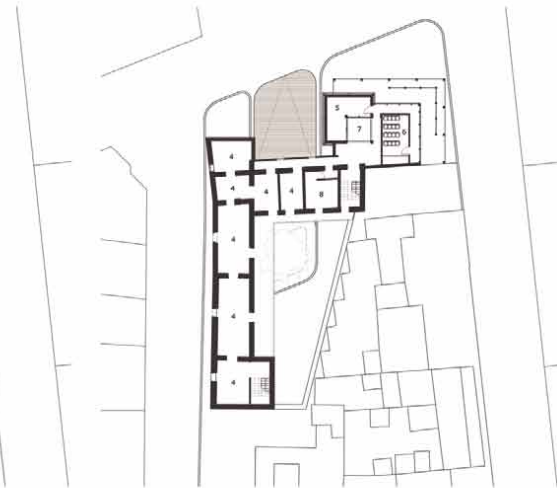
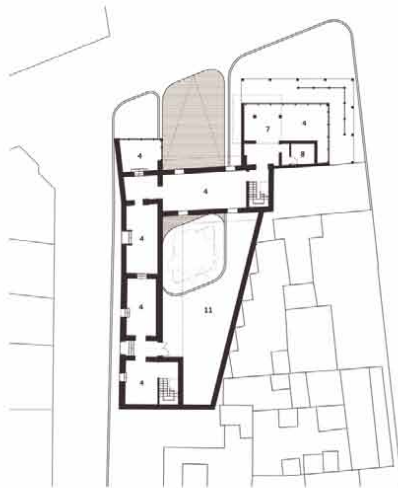
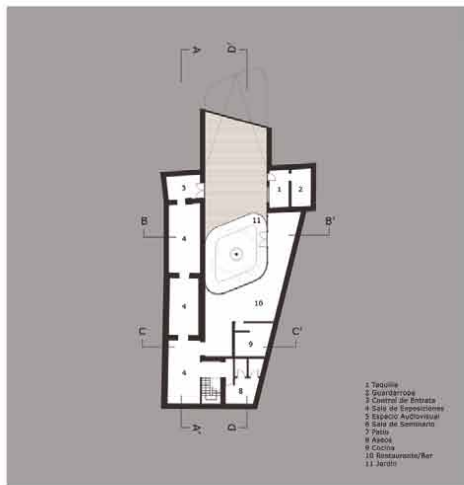
For recovering Capitán Quesada's house, the most important element of the project is taken from the environment around. In fact, the secular tree (*Dracaena Draco*) which is already present inside of the old building has been kept for the new project.

The entrance of the museum is placed at a lower floor than the former one in order to have a larger exposition surface, which reinforces the whole structure of the house.

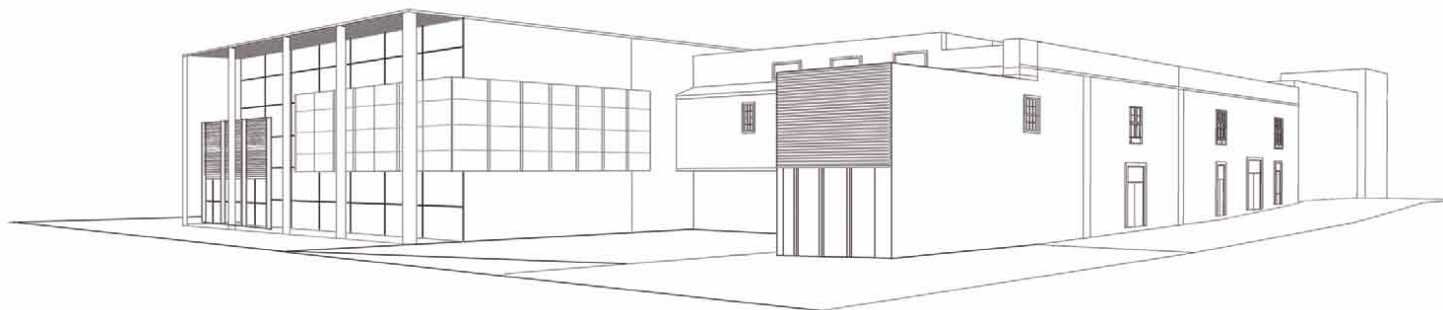
The new wing of the museum has been projected with modern materials in an open contrast with the old building.



Elevations and Sections



Floor Plans



PARMA STREAM PLANNING

Parma (Italy)

Project: Urban Requalification
Type: Urban-Planning Laboratory,
Faculty of Architecture,
University of Parma
Year: 2006/2007
Team: Roberto Mattioli,
Sara Sandei

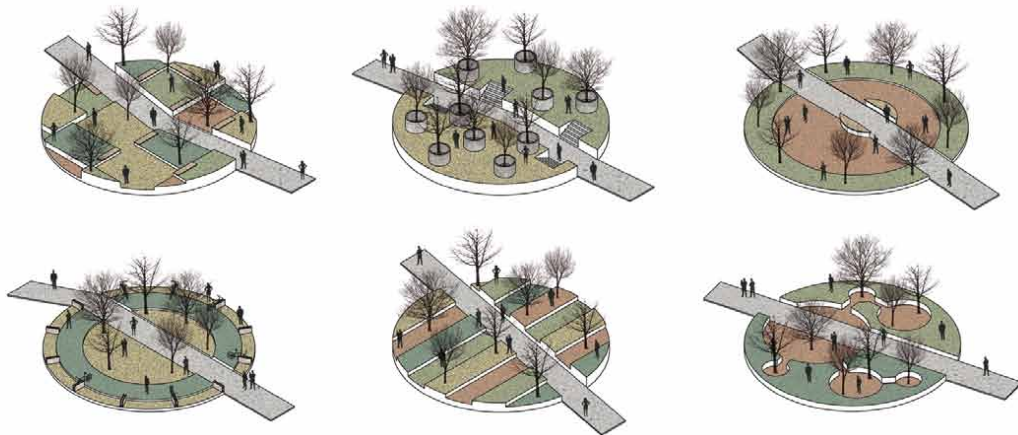


Masterplan

The main aim of the project was designing a urban park able to give the Lungo-Parma back to the town, joining its parts from North to South.

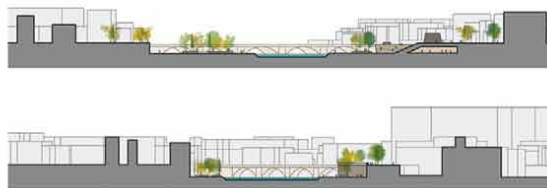
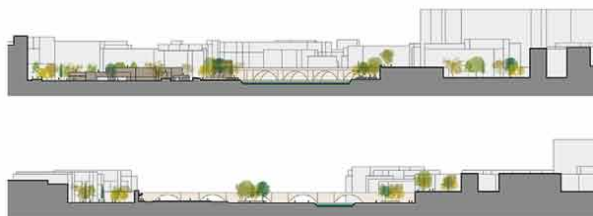
At the main points of interest, inhabited area enters into the park through permeable accesses.

Other points of access are then regularly placed along the stream path.



Circle Typologies



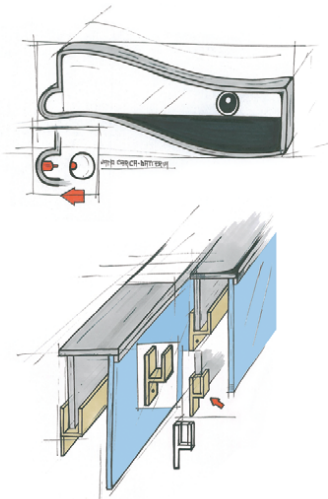


Sections



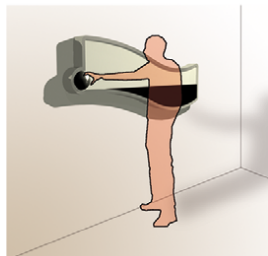
Industrial Design

Project: Interior Lamp
 Type: International Competition
 Year: 2006
 Team: Roberto Mattioli,
 Emanuele Resmini

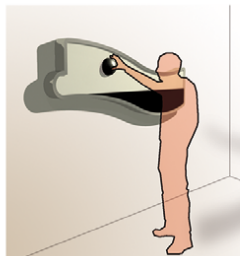


Sketches

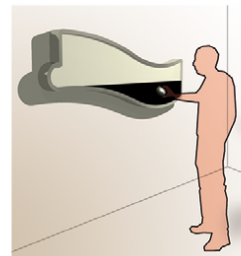
TuttoScore (Everything Flows) is a lamp made by a darkened etched glass "vertical river" fixed on a vertical wall. A glass slab divides into two parts a sphere whose parts are kept together by a magnet. The half sphere placed behind the glass slab functions as light source through a neon placed inside and powered by a battery. The other half sphere instead has the function of determining the movement of the light source. This is made possible by a simple scrolling of the front half-sphere along the glass slab.



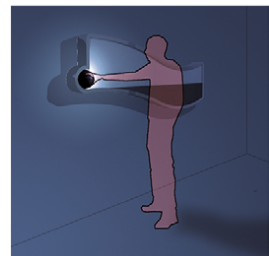
Charging Lamp Battery



Hard Light



Soft Light



Charging Lamp Battery



TUTTOSCORRE

A stylized logo for "TUTTOSCORRE". The text "TUTTOSCORRE" is written in a bold, orange, sans-serif font. Below the text is a white, curved, wave-like shape that resembles a stylized letter 'S' or a wave.

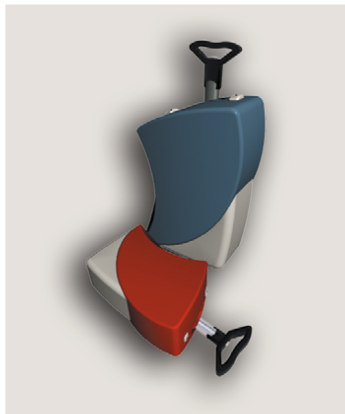
Hard Light



Soft Light



Project: Suitcase Set
 Type: National Competition
 Year: 2004
 Status: 2nd Prize
 Team: Roberto Mattioli



Digital Model

VALYS represents a continuous evolution in the search of new shapes and materials, offering a new way of travelling in respect of the needs of every single person.

The suitcase was created in two different versions: the first model is large size (80x60x35 cm) while the second is medium-small size (65x48x26 cm) and it is more suitable for short trips.

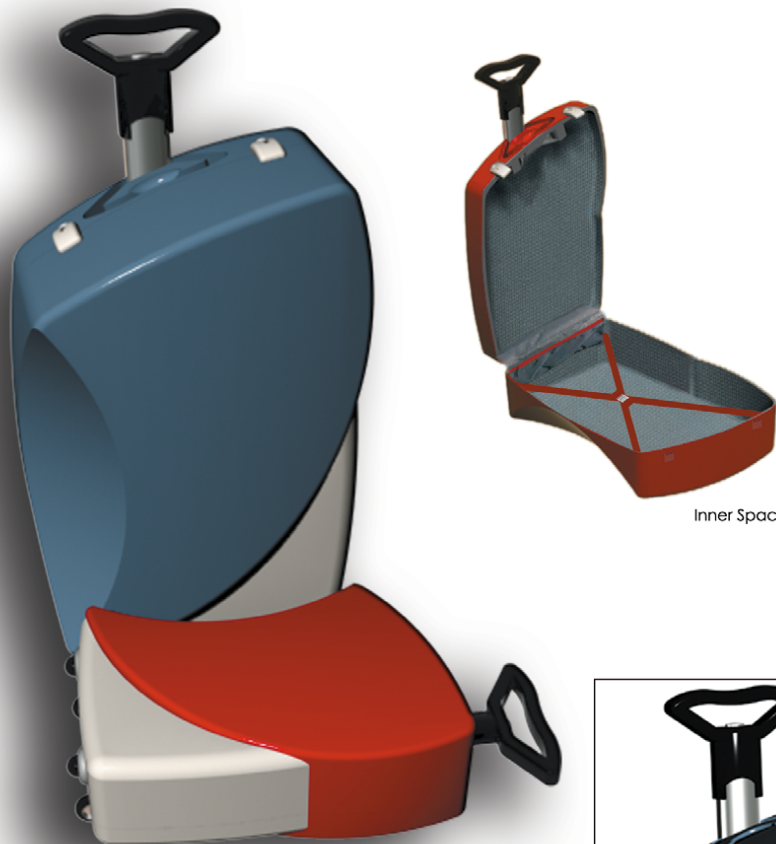
The suitcase can be ordered in different colors in order to provide an enduring and valuable product.

RONCATO



RONCATO

VALIGERIA

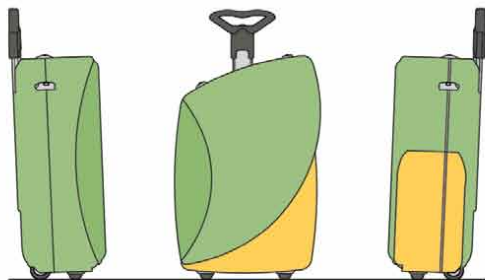


Inner Space

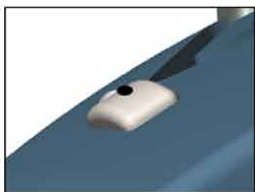
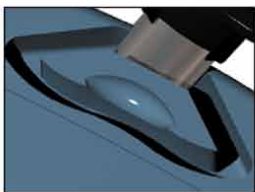




Trolley dim. 65x48x26 cm



Suitcase dim. 80x66x35 cm



Details



ROBERTO MATTIOLI
ARCHITECT

+45 502 57490
rm@cromaa.com
www.cromaa.com



